

# Who We Are

## Canadian Hard of Hearing Association

The Canadian Hard of Hearing Association (CHHA) was established in 1982 and is Canada's leading consumer advocacy organization representing the needs of the nearly 4 million people living with hearing loss. With a network across Canada, CHHA works cooperatively with hearing loss professionals, service providers, government and provides life-enhancing information, support, and advocacy to ensure people with hearing loss are able to overcome barriers in all aspects of their lives.

## Mohawk College

Mohawk College welcomes students of all ages and backgrounds seeking real-world learning experiences. With a broad offering of postsecondary education, continuing education, apprenticeship, community-based training, and online programs; Mohawk College has developed pathways to education and employment for learners throughout the Hamilton region and beyond. Mohawk College has positioned itself as a leader with an Access Strategy that provides equitable opportunities for marginalized communities and those experiencing social exclusion.

# Learn More



Accessible Navigation  
to Employment Program

Scan to visit the Accessible Navigation to Employment program webpage.

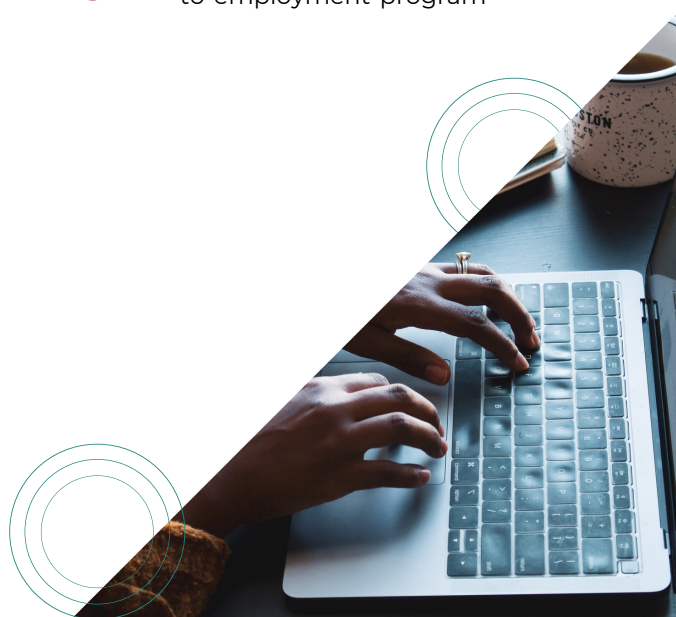


anteprogram@chha.ca



[www.chha.ca/accessible-navigation-to-employment-program](http://www.chha.ca/accessible-navigation-to-employment-program)

Learn and improve  
your skills in an  
accessible way.



Scan to visit the Accessible  
Navigation to Employment  
program webpage.

The Accessible Navigation to Employment project is funded by the Government of Canada's Skills for Success Program.

# The Facts

The Deaf and Hard of Hearing community in Canada faces increased barriers accessing the workforce. As a result, they are severely underrepresented within Canada's labour market.

The unemployment rate for Deaf and Hard of Hearing Canadian adults is **32% higher** than the national average.



Of Deaf and Hard of Hearing Canadians are employed full-time.



Of Deaf and Hard of Hearing Canadians are under-employed.



Of all employed Deaf and Hard of Hearing Canadians make over \$50K/yr.

# Our Program

The Accessible Navigation to Employment program is trying to **change this reality** for Deaf and Hard of Hearing Canadians by improving their foundational and transferable skills and connecting them to their local labour market.

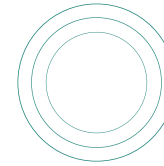
# ANTE Program

## Free Skills Upgrading

- All courses will be delivered online by Mohawk College in an accessible, asynchronous format.
- There will be 9 micro-credential courses for learners to complete, each course takes on average 30 hours to complete.
- Registration will open in April 2023.
- Learners will choose what courses they want to complete based on their interest, with the option to complete all 9 courses and a paid work placement to receive a certificate of completion

## Paid Work Placements

- A paid work placement, of up to 200 hours, is available to **eligible** ANTE program learners.
- Throughout the learning stage, participating employers will be presented to learners. The learner can ask questions and learn more about the employer.
- Learners will then apply their learning to a work placement. Our Employment Consultant will arrange all work placement coordination with the employer.
- The Employment Consultant will be available for the employer and participant throughout the duration of the placement for any support needed.
- Learners will be paid through the employer; wage and payment structure will be determined at the time of placement.



# Eligibility

Participants must:

- Identify as Deaf/ Hard of Hearing
- Be 18 years of age or older
- Be a Canadian Citizen, Permanent resident, or Refugee
- Live in British Columbia, Alberta, Ontario, or Nova Scotia

Interested learners are asked to please reach out via email at [anteprogram@chha.ca](mailto:anteprogram@chha.ca).

The learner will be sent eligibility questions to ensure the program is the best fit for them.

## Are you an employer?

Our goal is to practically combat the barriers that the Deaf and Hard of Hearing community faces when seeking employment, and provide a sense of hope to a group of individuals who are motivated to learn, connect, and contribute to their local communities.

We have financial and education supports available to increase employers' accessibility knowledge and support paid placements. **We can't do this without you.** Email us today at [anteprogram@chha.ca](mailto:anteprogram@chha.ca) to get involved.

